

State of Wyoming Corner Record

(In compliance with the *CORNER PERPETUATION AND FILING ACT*, Wyoming Statutes, 1997 Section 33-29-140 et. seq., and the Rules and Regulations of the Board of Professional Engineers and Professional Land Surveyors)

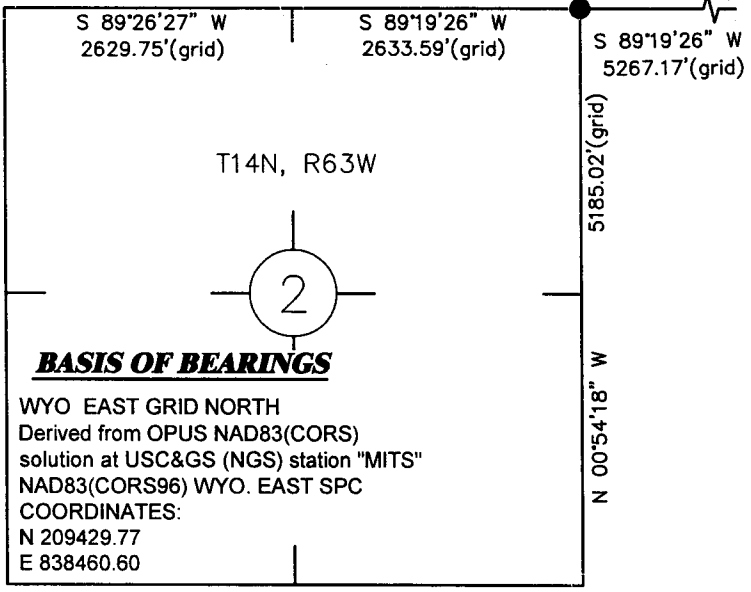
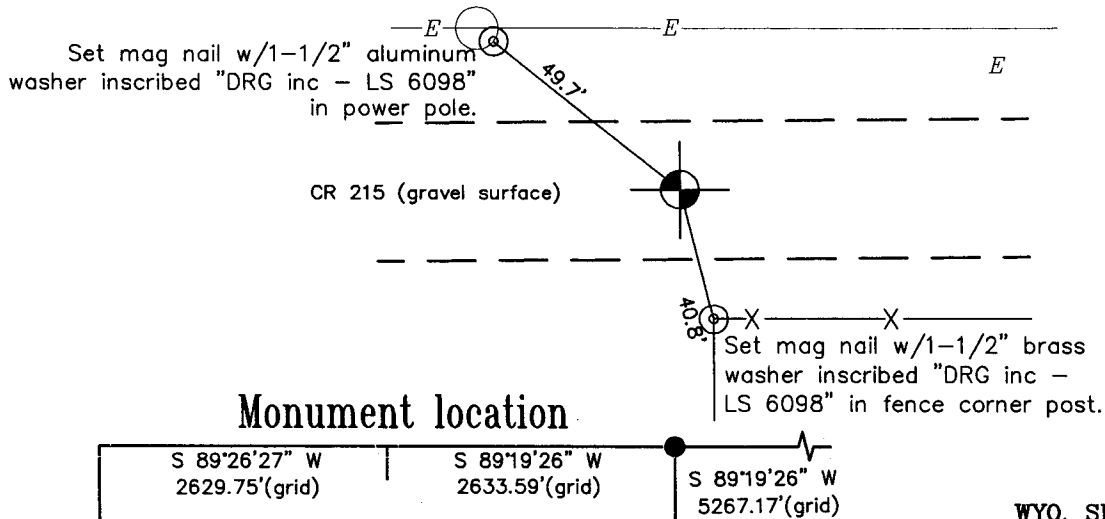
Reverse side of this form may be used if more space is needed.

Record of original survey and citation of source of historical information (if corner is lost or obliterated). Description of corner monumentation evidence found and/or monument and accessories established to perpetuate the location of this corner. Sketch of relative location of monument, accessories, and reference points with course and distance to adjacent corner(s) (if determined in this survey). Method and rationale for reestablishment of lost or obliterated corner.

U.S.G.L.O. 1870 Record: Set a Limestone 24x10x4 for corner to sections 1, 2, 35 & 36.

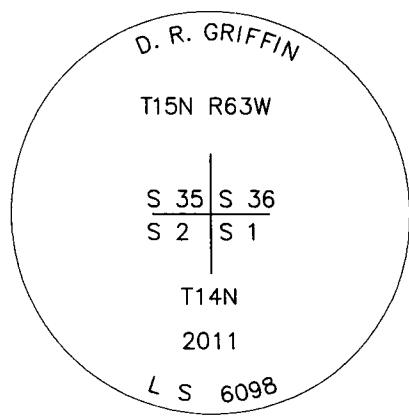
No evidence of corner monument or accessories found. Corner is lost.

Establish corner position by single proportion from the found monument (No. 5 rebar) for the north 1/4 corner of Section 2 and the found monument (1" rebar) for the northeast corner of Section 1. Set a 2-1/2" Aluminum Cap on a 30" no. 6 rebar 0.6' below gravel road surface and inscribed as shown below.



BASIS OF BEARINGS
 WYO EAST GRID NORTH
 Derived from OPUS NAD83(CORS)
 solution at USC&GS (NGS) station "MITS"
 NAD83(CORS96) WYO. EAST SPC
 COORDINATES:
 N 209429.77
 E 838460.60

WYO. SPC EAST GRID NORTH
 Set a 2-1/2" Aluminum Cap on a 30" no. 6 rebar 0.6' below gravel road surface by single proportion and inscribed as shown below.



Monument Inscription

Date of Field Work: 3/12/11

Office Reference: 18322

Cross Index Plat

	1	2	3	4	5	6	7	8	9	10	11	12	13	14	15	16	17	18	19	20	21	22	23	24	25	
A																										
B	+	+	+	+	+	+	+	+	+	+	+	+	+	+	+	+	+	+	+	+	+	+	+	+	+	+
C	+	6	+	5	+	4	+	3	+	2	+	1	+													
D	+		+		+		+		+		+		+		+		+		+		+		+		+	
E	+		+		+		+		+		+		+		+		+		+		+		+		+	
F	+		+		+		+		+		+		+		+		+		+		+		+		+	
G	+	7	+	8	+	9	+	10	+	11	+	12	+													
H	+		+		+		+		+		+		+		+		+		+		+		+		+	
J	+		+		+		+		+		+		+		+		+		+		+		+		+	
K	+		+		+		+		+		+		+		+		+		+		+		+		+	
L	+	18	+	17	+	16	+	15	+	14	+	13	+													
M	+		+		+		+		+		+		+		+		+		+		+		+		+	
N	+		+		+		+		+		+		+		+		+		+		+		+		+	
O	+		+		+		+		+		+		+		+		+		+		+		+		+	
P	+	19	+	20	+	21	+	22	+	23	+	24	+													
Q	+		+		+		+		+		+		+		+		+		+		+		+		+	
R	+		+		+		+		+		+		+		+		+		+		+		+		+	
S	+		+		+		+		+		+		+		+		+		+		+		+		+	
T	+	30	+	29	+	28	+	27	+	26	+	25	+													
U	+		+		+		+		+		+		+		+		+		+		+		+		+	
V	+		+		+		+		+		+		+		+		+		+		+		+		+	
W	+		+		+		+		+		+		+		+		+		+		+		+		+	
X	+	31	+	32	+	33	+	34	+	35	+	36	+													
Y	+		+		+		+		+		+		+		+		+		+		+		+		+	
Z	+		+		+		+		+		+		+		+		+		+		+		+		+	

Firm/Agency, Address
RONALD C. RENNKE
D. R. GRIFFIN & ASSOCIATES
1414 ELK STREET
ROCK SPRINGS, WYOMING 82901
 Telephone Number: (307) 362-5028

This corner record was prepared by me or under my direction and supervision.

SEAL & SIGNATURE



RECORDED 8/09/2011 AT 10:18 AM REC# 573804 BK# 2231 PG# 488
 DEBRA K. LATHROP, CLERK OF LARAMIE COUNTY, WY PAGE 1 OF 1

Corner Name Northeast Corner Section 2, T 14 N, R 63 W, 6th P.M.
 Same as the Southeast Corner Section 35, T 15 N, R 63 W, 6th P.M.
 County: Laramie, Wyoming

Cross-Index No.: A-21
 Cross-Index No.: Z-21